



## SOLAR DE BECQUER

Located on the south of Monte Yerga on the sun faced side of the slopes, the Cuesta de la Reina Estate commences at an altitude of 450 meters and ascends to 800 meters. The soils, clayey-calcareous, are extremely poor and with abundance of boulders. The estate of 120 Hectare has belonged to the family for four generations and the family itself has always cultivated the vineyard.

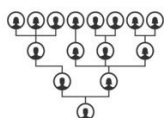


Gustavo Adolfo Becquer

## KEY SELLING POINTS



HAND PICKED



MULTI-  
GENERATIONAL



TRUE TO  
VARIETAL



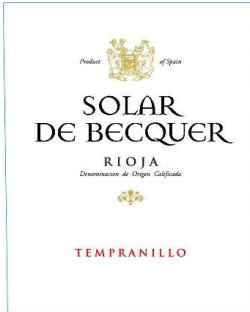
OLDEST VINES  
IN RIOJA 100+



PRACTICING  
ORGANIC



HIGHLY  
RATED



### Joven Tempranillo

**Varietal(s):** 80 % Tempranillo, 20 % Garnacha

**Origin:** Rioja, Spain

**Case Size:** 12/750ml

**Barcode:** 8421742100063

**Vinification:** Hand Harvested

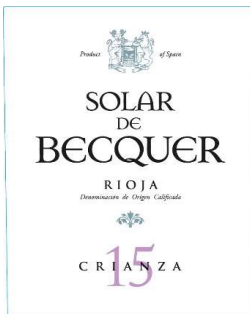
**Of Note:** Practicing Organic

**Analysis:** ABV 13%

#### Tasting:

Cherry red color with purple hues that highlight his youth. Clean in the nose with aromas of little wild berries, red fruits and anise. On the palate, a warm presence, slightly astringent what proposes a pleasant finish, fresh and fruity.

**Pairs With:** Creamy cheeses, dressed meat without too much pepper and white meat with creamy sauces.



### Crianza

**Varietal(s):** 70% Tempranillo, 20% Mazuelo, 10% Garnacha

**Origin:** Rioja, Spain

**Case Size:** 12/750ml

**Barcode:** 859565000037

**Vinification:** Hand Harvested, 5yrs oak aged, 6 mos. bottle aged

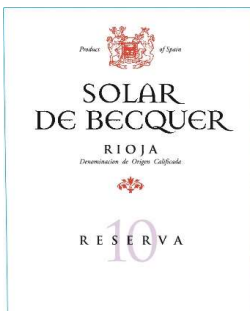
**Of Note:** Practicing Organic

**Analysis:** ABV 13.5%

#### Tasting:

Bright ruby red. Clean and complex on the nose, Harmony of fruit with notable hints of fine oak. Well-structured on the palate, savory and balanced. The wine shows great character and has a long persistence. Complex retro nasal, elegant with notes of quality barrel wood.

**Pairs With:** Accompanies perfectly with semi aged cheeses, red meat, roasts, stews and game.



### Reserva

**Varietal(s):** 75% Tempranillo, 25% Garnacha

**Origin:** Rioja, Spain

**Case Size:** 12/750ml

**Barcode:** 8421742100032

**Vinification:** Hand Harvested, 5yrs oak aged, 2yrs bottle aged

**Of Note:** Practicing Organic

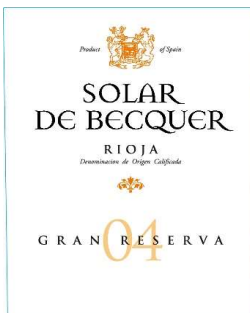
**Analysis:** ABV 13.5%

#### Tasting:

Brick red deep covered. Clean, complex and with a good intensity on the nose. Red fruit aromas well conjoined with those of the aging. Balsam, spices (pepper), tobacco and leather. Well structured, tasty, large, soft but with character and a good harmony in its flavors. Complex and clean retro nasal.

**Pairs with:** Jamón serrano and Ibérico. Aged cheese, red meat, stews and game.

**Accolades:** 91pts Wine Enthusiast



### Gran Reserva

**Varietal(s):** 70% Tempranillo, 15% Garnacha, 15% Mazuelo

**Origin:** Rioja, Spain

**Case Size:** 12/750ml

**Barcode:** 859565000051

**Vinification:** Hand Harvested, 5yrs oak aged, 3yrs bottle aged

**Of Note:** Practicing Organic

**Analysis:** ABV 13.5%

#### Tasting:

Brick red deep covered. Clean on the nose with spicy aromas, toasts and dried fruits. Well structured, savory, ample and well balanced. Pleasant finish and harmonized flavors. Complex retronasal, in which we find balsamics and good oak. Finishes elegantly.

**Pairs with:** Jamón Serrano and Ibérico, aged cheese, red meats, stews and roasts.

## Gustavo Adolfo Becquer



Becquer is the Poet referenced and he is from the Romantic period in Spain.

His most famous work is "Rimas y Leyendas" = "Rhymes and Legends".

His most famous Rhymes and Legends were written at the Familia Escudero vineyards

The Escudero family asked the heirs of Becquer if they could use their name as a tribute to the author.

They agreed, so his name is the link between the romanticism in both arts (Literature and Wine)

Solar means "plot" . So the name of the wine means literally the Plot of Becquer.