



## ABOUT

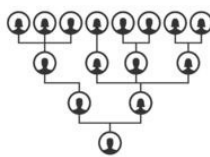
Corte Armano is produced by the Campagnola family in Valgatarà, a small village in the low hills near Marano in the heart of the Valpolicella Classico region. The winery was founded by Carlo Campagnola, but this winery's history is all about the courage and hard work of his wife, Catarina Zardini. After Carlo's untimely death, Catarina courageously continued the business and won the medal for the best *Vino Reccioto* at the 1907 wine exhibition in Verona, thus laying the foundation for five generations of success.



## KEY SELLING POINTS



WOMAN OWNED



MULTI-  
GENERATIONAL



TRUE TO VARIETAL



EXCELLENT PRICE  
TO QUALITY RATIO



### Valpolicella Classico Superiore Ripasso

**Varietal(s):** 70% Corvina, 30% Rondinella

**Origin:** Veneto, Italy

**Case Size:** 12/750ml

**Barcode:** 020106503397

**Vinification:** Hand Picked, Produced in the Ripasso method

**Of Note:** 5 generations of family winemakers

**Tasting:** Intense red garnet color. Rich fruit-laden aromas. Full warm flavors expand in the mouth, marked by a luscious, silky texture.

**Food Pairing** Ideal with red meat and aged cheeses



### Amarone della Valpolicella Classico

**Varietal(s):** 35% Corvinone Veronese, 35% Corvina Veronese, 30% Rondinella

**Origin:** Veneto, Italy

**Case Size:** 12/750ml

**Barcode:** 02016505032

**Vinification:** Hand Picked, Oak Aged

**Of Note:** 5 generations of family winemakers

**Tasting:** Intense ruby red color with violet edges. Warm, spicy, powerful nose with intense aromas of cherry, almond and vanilla. Full-bodied, supple and smooth

**Food Pairing** Perfect with red meats, game and cheese.

**Accolades** 92 Decanter(2013), 90 Wine Spectator (2011)