

# Chateau Bianca

## ABOUT CHATEAU BIANCA

Chateau Bianca Winery and Vineyard is a family owned and operated winery established in 1990. The winery and vineyard are located in the Mid-Willamette Valley just outside of Dallas, Oregon. Chateau Bianca is committed to high-quality wines, so we keep our annual production small and handcrafted.

“Our family has carried on the fourth-generation wine-making tradition. Andreas’ great-grandfather started producing wine near Wurzburg, Germany. This love of winemaking has crossed the globe and our family has been producing wines in beautiful Oregon for over 35 years. “



**Chateau Bianca Pinot Gris:** Straw gold color, nose of tropical and tree fruits, palate is crisp and clean with hints of citrus.

788084100198 2018 Wine Enthusiast 90 pts



**Chateau Bianca Riesling:** Straw yellow color, nose and palate of peach, apricot and nectarine shows through to the finish.

788084100075 2018 Wine Enthusiast 91 pts



**Chateau Bianca Pinot Noir:** Ruby red color, nose of soft fruit and spice with a touch of delicate toasted wood, palate is sexy and well balanced. 788084100174

## KEY SELLING POINTS



CERTIFIED  
SUSTAINABLE



ENVIRONMEN-  
TALLY FOCUSED



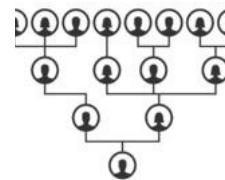
ORGANIC  
VITICULTURAL  
PRACTICES



LOW CARBON  
FOOTPRINT



RECENT AVA



MULTI-  
GENERATIONAL  
WINEMAKERS



EXCELLENT  
PRICE TO  
QUALITY RATIO